

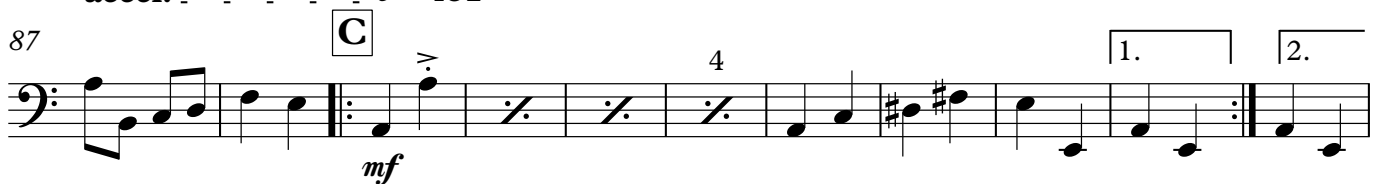
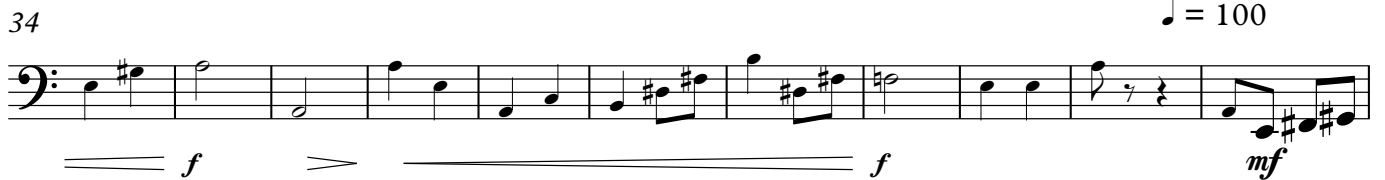
Le Grand Blond

Bass

Vladimir Cosma
Bearb.: Helmut Eisel

♩ = 92

nur Bassklarinette (falls vorhanden) **A**



2

Bass

108 **D** 4 x

Musical staff for measure 108, starting with a bass clef and a key signature of one sharp (F#). The staff contains a sequence of eighth and quarter notes with stems pointing up. A dynamic marking *p* is placed below the staff.

116

Musical staff for measure 116, continuing the bass clef and one sharp key signature. It features a sequence of eighth and quarter notes. A dynamic marking *mp* is placed below the staff. The staff concludes with a first ending bracket labeled "1. - 3." and a second ending bracket labeled "4.".

125 -

Musical staff for measure 125, continuing the bass clef and one sharp key signature. It features a sequence of eighth and quarter notes. A dynamic marking *mf* is placed below the staff.

134

Musical staff for measure 134, continuing the bass clef and one sharp key signature. It features a sequence of eighth and quarter notes.

143

Musical staff for measure 143, continuing the bass clef and one sharp key signature. It features a sequence of eighth and quarter notes.

150

Musical staff for measure 150, continuing the bass clef and one sharp key signature. It features a sequence of eighth and quarter notes. A double bar line is present at the end of the staff.

158 **E**

Musical staff for measure 158, starting with a bass clef and a key signature of two sharps (F# and C#). The staff contains a sequence of eighth and quarter notes. A dynamic marking *f* is placed below the staff.

165 | 1. | 2.

Musical staff for measure 165, continuing the bass clef and two sharp key signature. It features a sequence of eighth and quarter notes with stems pointing down. The staff concludes with a first ending bracket labeled "1." and a second ending bracket labeled "2.".